

GC/Waldom

GC Wipes

19-746 White 7" x 13-1/2" - 30 sheets per package

Soft non-woven GC wipes with the strength of polyester rayon. Safe for critical applications. Provides excellent contamination control on precise instrumentation, semi-conductors and other critical uses. Applications: for cleanroom applications; resistant to most solvents, alcohols and dilute acids; cleaning photo processing equipment; high liquid retention; wiping laboratory instrumentation; will not abrade surfaces; computer screens; contamination control.



GC Trigger

19-765 16 oz. bottle with trigger
19-830 Trigger Only

An all purpose consumer sprayer for those applications requiring a smaller spray pattern. The 3 position nozzle allows spray or stream applications. This unit fits most glass or plastic containers with a threaded top. The dip tubes in 7 1/4" long to fit GC's non-aerosol containers. This trigger is compatible with all GC chemicals.



"The Pump"™

19-763 6 fl. oz. pump bottle
19-769 3 fl. oz. pump bottle

New air-powered spray bottle that provides an environmentally conscious alternative to conventional aerosols. The refillable, reusable spray bottle uses air as a propellant with its self-contained "Air Pump". Save money with "The Pump" by buying liquid solvents in bulk. This durable unit replaces the need for aerosol cans. "The Pump" provides an excellent cleaning alternative to aerosols. Use with cleaners, degreasers, alcohol, CFC's, HCFC's and other chemicals.



Foam Cleaning Swabs

SC20
SC20B Package of 100 swabs

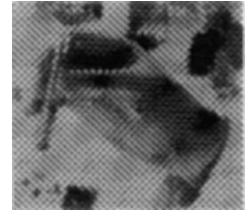
By keeping heads clean on recorders, the equipment will operate longer. These swabs are not cotton but soft foam, making them lintless, as well as reusable. 6" long with 20 to blister card.



Nitrile Disposable Gloves

12-510 1 pair

These gloves are perfect for use with chemicals involved with making PC boards. Good for use with photo chemicals (negative or positive) and ferric chloride etching solution.



Brushes



Part No.	Bristle Length	Bristle Width	Bristle Trim	Bristle Material	Bristle Retention	Handle Material	Handle Length
2040	1 ^{1/4"}	1/8"	7/16"	horse hair	hand laced	anodized aluminum	6 ^{1/2"}
2041*	1 ^{1/4"}	1/8"	7/16"	stainless steel .003"	hand laced	anodized aluminum	6 ^{1/2"}
2042	1 ^{1/4"}	3/8"	7/16"	horse hair	hand laced	anodized aluminum	6 ^{1/2"}
2043*	1 ^{1/4"}	3/8"	7/16"	stainless steel .003"	hand laced	anodized aluminum	6 ^{1/2"}
2030	1/8"	1/16"	1/8"	goat hair	machine stamped	stainless steel	3 ^{1/2"}
2031	1/8"	5/16"	A - 1/2"; B - 1/4"	horse hair	machine stamped	stainless steel	4 ^{1/2"}
2032	1/4"	1/2"	A - 1/2"; B - 3/16"	horse hair	machine stamped	CAD plated steel	4 ^{1/2"}
2033	1/4"	1/2"	3/4"	horse hair	machine stamped	CAD plated steel	4 ^{1/2"}
2020	1 ^{3/8"}	5/16"	7/16"	horse hair	staple set	wood laminate	7 ^{3/4"}
2021	1 ^{3/8"}	5/16"	7/16"	hog bristle	staple set	wood laminate	7 ^{3/4"}
2022	2 ^{1/4"}	1"	3/4"	hog bristle	staple set	wood laminate	8 ^{3/8"}
2023	1 ^{1/4"}	5/16"	1"	horse hair	staple set	poly-propylene	7 ^{3/16"}
2025	1 ^{3/8"}	5/16"	7/16"	brass .003"	staple set	wood laminate	7 ^{3/4"}
2026	5"	1/2"	3/4"	horse hair	staple set	wood	10 ^{3/16"}
2027	7/8"	3/8"	1/2"	hog bristle	staple set	wood	5" **
2028	1 ^{3/8"}	5/16"	7/16"	stainless steel .006"	hand laced	wood laminate	7 ^{3/4"}
2029	7/8"	3/8"	1/2"	horse hair	staple set	wood	5" **
2051	1/8"	1/8"	3/16"	stainless steel .003"	machine stamped	delrin	5 ^{1/2"}

*ESD safe brushes. All other metal and wood handle brushes can be used in ESD sensitive environments as long as the brush remains saturated in solvent.

**Excluding 1/2-inch bristle trim.

Chemical Accessories



Tech Spray has designed a brush line which offers a brush for your specific needs, whether you are cleaning sensitive optics or scrubbing heavy soils. The bristle cut is designed to offer optimum cleaning with minimum effort. The quality natural bristle materials selected are thoroughly cleaned prior to manufacturing. TechBrush(tm) handles are designed for a comfortable fit, while offering a variety of handle materials, including anodized aluminum, stainless steel, wood and Delrin™ material. The TechBrush™ manufacturing process insures a durable long-lasting brush which will suit your specific needs.

Tips for Selecting the Right TechBrush™

Type of Soil to be Removed. The wide selection of bristle materials will accommodate a variety of cleaning needs. Natural hair bristles are suitable for lighter soils, while the stiffer metal bristles are most effective against heavier solids.

Type of Cleaning Surface. Sensitive surfaces should be cleaned with soft, natural hair bristles. Stainless steel and brass bristles are best suited for abrasion-resistant surfaces.

Size of Cleaning Area. Our instrument cleaning brushes and technical cleaning brushes are required when cleaning small crevices and hard-to-reach spaces. For big jobs and surface cleaning, we offer a variety of large, general cleaning brushes.

Swabs

Cotton Tipped



Part No.	Tip Width	Attachment of Tip	Handle Length	Handle Material	Anti-Static Handle	Pliable Handle
2302	7/16"	heat sealed	6"	poly-propylene	yes	yes
2303	1/4"	heat sealed	6"	poly-propylene	yes	yes
2306	1/2"	heat sealed	5"	poly-propylene	yes	yes
2307	3/16"	heat sealed	4"	poly-propylene	yes	yes
2300	3/16"	wrapped	6"	wood	neutral	no
2301	3/16"	wrapped	6"	wood	neutral	no
2313	1/8"	wrapped	3 1/4"	paper	neutral	
2314	3/8"	heat sealed	3 1/2"	poly-propylene	yes	yes
2315	3/8"	heat sealed	4 3/4"	poly-propylene	yes	yes



Tech Spray's TechSwabs™ are precisely designed, manufactured and packaged to serve the various cleaning and maintenance needs in the electronics industry. TechSwabs™ are manufactured in accordance with our rigid specifications, using specialized materials to ensure low particle generation and solvent compatibility. Swab tips are manufactured with a variety of quality materials to suit different tasks. Most are heat sealed onto handles to avoid the contaminating residues of adhesives. Handles are fashioned from a selection of natural and man-made materials chosen for their flexibility and durability. TechSwabs™ are packaged in our Class 100 cleanroom in static dissipative resealable bags that control both electrostatic discharge and contamination. Therefore, TechSwabs™ are ideal for cleanroom use.

Wipes

TechClean® Wiper 2350-100



Specifically designed for cleanroom maintenance, this hydroentangled cellulose/polyester wipe has high absorbency with extra low particulate and chemical extractables. Applications: cleanroom maintenance, solvent and aqueous absorbent, dislodgement of heavy soils, static free environments. Specifications: Exceeds U.S. Air Force requirements for surface contamination, HP 9300-1618.

TechClean® Purwipe 2355-100



100% continuous filament polyester fiber in an interlocking knit which gives this wipe super high absorbency, low particulate generation and high durability. Applications: cleanroom maintenance, absorbs solvents and aqueous liquids, cleaning and burnishing magnetic heads, optical or sensitive surface cleaning, wiping abrasive surfaces.

TechClean® Absorbwipe 2351-100



Absorbwipe has an absorption rate of six times its own weight. This soft, hydroentangled 100% polyester wipe is perfect for cleaning optical equipment and other sensitive surfaces. Applications: cleaning optical and sensitive surfaces where high absorption is required, cleanroom maintenance, objects that require and extremely soft wipe, cleaning and burnishing.

No part of this catalog may be reproduced without the express written permission of Edge, Inc.