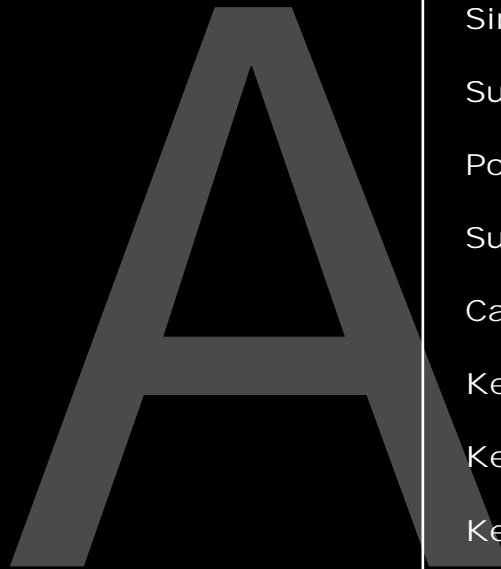




Work Area Outlet Systems



Category 6 / 5e / 3 Connector Modules

Keystone Jack Connector Modules

Multimedia Connector Modules

Fiber Optic Connector Modules

Single and Double Gang Faceplates

Surface Mount Faceplate Boxes

Port & Faceplate Designation Labels

Surface Mount Multimedia Boxes

Category 6 / 5e / 3 Keystone Jacks

Keystone Jack Dust Covers and Icons

Keystone Jack Termination Fixture

Keystone Jack Multimedia Modules

Keystone Jack Faceplates

Keystone Jack Modular
Furniture Adapters

Keystone Jack Surface Mount Boxes

A

WORK
AREA

Category 6 Connector Modules are available in a single and dual port configuration, which exceed TIA/EIA-568-B.2-1 performance specifications. They feature a front-loading snap-in design, allowing quick and easy outlet configuration and field changes. Modules are compatible with both T568A and T568B wiring systems and can be terminated with a standard 110 or Krone single position tool. Modules can be provided with a variety of jack colors to enhance port identification. Preprinted icon labels and customer printable labels are available to quickly identify different types of service. Modules have a recessed area above the jack to ensure alignment of labels. When combined with Signamax Category 6 Patch Panel and Patch Cords, superior channel performance is guaranteed.

Category 6 Connector Modules

Model
SCM1-C6BU



Model
SCM2-C6YE



Model
SCM2-C6-IV



CAT 6

Category 6 Connector Modules / Universal Wiring T568A/B

PART NO.	DESCRIPTION
SCM1-C6XX	1-Port Category 6 Module, Universal Wiring T568A/B
SCM2-C6XX	2-Port Category 6 Module, Universal Wiring T568A/B

Standard module color is Light Ivory. For White add -WH.

For Category 6 jack color substitute XX in P/N:

BK=Black BU=Blue GN=Green OR=Orange
RD=Red WH=White YE=Yellow IV=Light Ivory

A1

PREMISE CONNECTIVITY SYSTEMS

800 446-2377 or visit our Web Site at www.signamax.com.

Connector modules in both single and dual port style, which exceed TIA/EIA-568-B.2 Category 5e specifications, are available featuring the same front-loading snap-in design as our Category 6 modules. Category 5e modules can be provided with a variety of jack colors to enhance port identification. Preprinted icon labels and customer printable labels are available to quickly identify different services. Modules have a recessed area above the jack to ensure alignment of labels. Shielded single and dual port modules are available for applications requiring a screened or fully shielded cabling system. Both modules feature universal wiring, supporting T568A and T568B configurations, and can be terminated using a standard 110 or Krone single position tool. When combined with the Signamax Category 5e Patch Panel and Patch Cords, superior channel performance is achieved.

Category 5e Connector Modules



Model
SCM1-C5EBU



Model
SCM2-C5ERD



CAT 5e

Category 5e Connector Modules/Universal Wiring T568A/B

PART NO.	DESCRIPTION
SCM1-C5EXX	1-Port Category 5e Module, Universal Wiring T568A/B
SCM2-C5EXX	2-Port Category 5e Module, Universal Wiring T568A/B
SCM1-C5ES	1-Port Category 5e Shielded Module, Universal Wiring T568A/B
SCM2-C5ES	2-Port Category 5e Shielded Module, Universal Wiring T568A/B

Standard module color is Light Ivory. For White add -WH.

For Category 5e jack color substitute XX in P/N:

BK=Black BU=Blue GN=Green OR=Orange
RD=Red WH=White YE=Yellow IV=Light Ivory

Model
SCM1-C5ES



Model
SCM2-C5ES

A

WORK
AREA

Signamax Category 5e Connector Modules are available in single and dual port configurations, and exceed TIA/EIA-568-B.2 performance specifications. With the front-loading snap-in feature, outlet configuration and field changes are made easy. Modules are compatible with both T568A and T568B wiring systems and feature a 4-pair inline 110 connector compatible with our multipair 110 tool, which minimizes termination time. Preprinted icon labels and customer printable labels are available to quickly identify different services. Modules have a recessed area above the jack to ensure alignment of labels. Combine Signamax Category 5e Patch Panel and Patch Cords with these modules to achieve maximum channel performance.

Category 5e Connector Modules



Model
SCM145-C5E



CAT 5e

Category 5e Connector Modules / Universal Wiring T568A/B

PART NO.	DESCRIPTION
SCM145-C5E	1-Port Category 5e Module, Universal Wiring T568A/B
SCM245-C5E	2-Port Category 5e Module, Universal Wiring T568A/B

Standard module color is Light Ivory. For White add -WH.

Category 5e jack color is black, 4-pair in-line 110 connector, printer circuit board based.

A3

PREMISE CONNECTIVITY SYSTEMS

800 446-2377 or visit our Web Site at www.signamax.com.

Category 3 connector modules can be specified in RJ-12 six-wire and RJ-45 eight-wire USOC wiring configurations, in both single and dual port styles. The SCM112 and SCM145 feature a 4-pair inline 110 connector compatible with our multipair 110 tool, which minimizes termination time. Preprinted icon labels and customer printable labels are available to quickly identify different services. Modules have a recessed area above the jack to ensure alignment of labels.

Keystone jack connector modules accommodate either one or two snap-in Category 6 or Category 5e modular jacks. For this style, jacks are ordered separately.

Category 3 & Keystone Jack Connector Modules



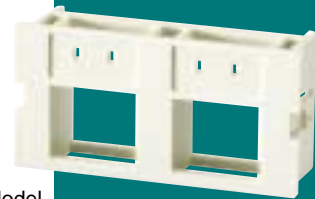
CAT 3



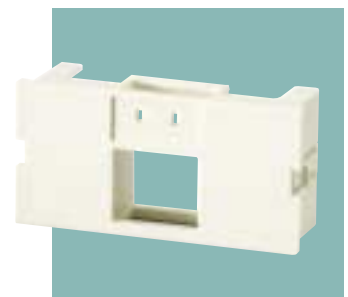
Model
SCM145-C3U



Model
SCM245-C3U



Model
SCM-2-KU



Model
SCM-1-KU

Category 3 Connector Modules/USOC Wiring

PART NO.	DESCRIPTION
SCM1-C3XX	1-Port Category 3 RJ-12 6 Wire Module, USOC
SCM2-C3XX	2-Port Category 3 RJ-12 6 Wire Module, USOC

Standard module color is Light Ivory. For White add -WH.
For Category 3 jack color substitute XX in P/N:
WH=White IV=Light Ivory

Category 3 Connector Modules/USOC Wiring

PART NO.	DESCRIPTION
SCM112-C3U	1-Port Category 3 RJ-12 6 Wire Module, USOC
SCM145-C3U	1-Port Category 3 RJ-45 8 Wire Module, USOC
SCM212-C3U	2-Port Category 3 RJ-12 6 Wire Module, USOC
SCM245-C3U	2-Port Category 3 RJ-45 8 Wire Module, USOC

Standard color is Light Ivory. For White add -WH.
Category 3 jack color is black, 4-pair in-line 110 connector, printer circuit board based.

Keystone Jack Connector Modules

PART NO.	DESCRIPTION
SCM-1-KU	1-Port Keystone Connector Module, Unloaded
SCM-2-KU	2-Port Keystone Connector Module, Unloaded

Standard color is Light Ivory. For White add -WH.

A

WORK
AREA

Multimedia connector modules can be used to accommodate audio, video, or CATV system cabling, in auditoriums, classrooms, media centers, conference rooms or lecture halls. These inserts can be used to configure multimedia only connection plates, or those to be integrated with voice & data connections.

Multimedia Connector Modules

Model
SCM-1BNC



Model
SCM-1F



Model
SCM-1SVHS



Model
SCM-1BNC-A



Models
SCM-1SVHSF-A



Blank Modules

PART NO.	DESCRIPTION
SCM-BL	Blank Module

Standard color is Light Ivory. For White add -WH.

Single Port Multimedia Connector Modules/180° Exit

PART NO.	DESCRIPTION
SCM-1F	1-Port F-Type Module
SCM-1BNC	1-Port BNC Module
SCM-1RCA	1-Port RCA Feed-Thru Module - White
SCM-1RCAS	1-Port RCA Solder Tail Module - White
SCM-1SVHSF	1-Port SVHS Feed-Thru Module
SCM-1SVHS	1-Port SVHS/110 Module

Standard color is Light Ivory. For White add -WH.

Single Port Multimedia Connector Modules/45° Exit

PART NO.	DESCRIPTION
SCM-1F-A	1-Port F-Type Module
SCM-1BNC-A	1-Port BNC Module
SCM-1RCA-A	1-Port RCA Feed-Thru Module - White
SCM-1RCAS-A	1-Port RCA Solder Tail Module - White
SCM-1SVHSF-A	1-Port SVHS Feed-Thru Module

Standard color is Light Ivory. For White add -WH.

RCA modules provide single, dual or three connectors in either feed-thru coupler or solder tail types. Our Super VHS module features an IDC termination for speed of installation. Blank modules fill unused spaces in the plate opening and provide for future expansion. All modules feature a front-loading snap-in design, which allows changes or additions in outlet configuration to be made easily.

Multimedia Connector Modules



Dual Port Multimedia Connector Modules/180° Exit

PART NO.	DESCRIPTION
SCM-2F	2-Port F-Type Module
SCM-2BNC	2-Port BNC Module
SCM-2FBNC	2-Port F-Type/BNC Module
SCM-2RCA	2-Port RCA Feed-Thru Module - Red and Yellow
SCM-2RCAS	2-Port RCA Solder Tail Module - Red and Yellow
SCM-3RCA	3-Port RCA Feed-Thru Module - Red, Yellow and White
SCM-3RCAS	3-Port RCA Solder Tail Module - Red, Yellow and White
SCM-2SVHSF	2-Port SVHS Feed-Thru Module
SCM-2RBA	2-Port 3-Way Binding Post Module - Red and Black

Standard color is Light Ivory. For White add -WH.

Dual Port Multimedia Connector Modules/45° Exit

PART NO.	DESCRIPTION
SCM-2F-A	2-Port F-Type Module
SCM-2BNC-A	2-Port BNC Module
SCM-2FBNC-A	2-Port F-Type/BNC Module
SCM-2RCA-A	2-Port RCA Feed-Thru Module - Red and Yellow
SCM-2RCAS-A	2-Port RCA Solder Tail Module - Red and Yellow
SCM-3RCA-A	3-Port RCA Feed-Thru Module - Red, Yellow and White
SCM-3RCAS-A	3-Port RCA Solder Tail Module - Red, Yellow and White
SCM-2RBA-A	2-Port 3-Way Binding Post Module - Red and Black

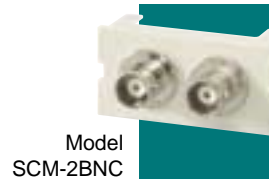
Standard color is Light Ivory. For White add -WH.



Model
SCM-2RCA



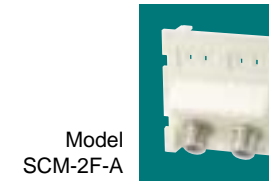
Model
SCM-3RCA



Model
SCM-2BNC



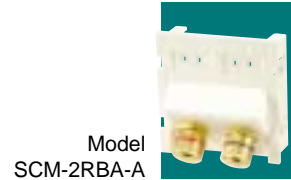
Model
SCM-3RCA-A



Model
SCM-2F-A



Model
SCM-2BNC-A



Model
SCM-2RBA-A

Fiber Optic connector modules can be added to a workstation cabling system, where fiber optic cables terminate and provide an interface to PCs or other fiber optic connection systems. These modules integrate seamlessly into the Signamax outlet system, covering the entire range of industry-standard interfaces including ST, SC, LC, and MT-RJ.

Fiber Optic Connector Modules



Model
SCM-2SC-A



Model
SCM-2ST-A



ST Fiber Optic Connector Modules

PART NO.	DESCRIPTION
SCM-2ST	2-Port (2-Fiber) ST SM/MM Fiber Module, 180° Exit
SCM-2ST-C	2-Port (2-Fiber) ST SM Fiber Module, 180° Exit
SCM-2ST-A	2-Port (2 Fiber) ST SM/MM Fiber Module, 45° Exit
SCM-2ST-C-A	2-Port (2 Fiber) ST SM Fiber Module, 45° Exit

Standard module color is Light Ivory. For White add -WH.
SM/MM adapters use phosphor bronze sleeve. SM adapters use zirconia ceramic sleeve.

SC Fiber Optic Connector Modules

PART NO.	DESCRIPTION
SCM-2SC	2-Port (2-Fiber) SC SM/MM Fiber Module, 180° Exit
SCM-2SC-C	2-Port (2-Fiber) SC SM Fiber Module, 180° Exit
SCM-2SC-A	2-Port (2 Fiber) SC SM/MM Fiber Module, 45° Exit
SCM-2SC-C-A	2-Port (2 Fiber) SC SM Fiber Module, 45° Exit

Standard module color is Light Ivory. For White add -WH.
SM/MM adapters use phosphor bronze sleeve. SM adapters use zirconia ceramic sleeve.

Modules are provided in a straight or angled-exit coupling of work-area fiber optic cable connections. These fiber optic adapters are provided with either phosphor bronze sleeves to support either multimode or singlemode applications. Ceramic sleeve option is also offered, for ST, SC and LC connector interfaces.

Fiber Optic Connector Modules



Model
SCM-2LC-A



Model
SCM-1MTRJ



LC Fiber Optic Connector Modules

PART NO.	DESCRIPTION
SCM-1LC	1-Port (2 Fiber) Duplex LC SM/MM Fiber Module, 180° Exit
SCM-1LC-C	1-Port (2 Fiber) Duplex LC SM Fiber Module, 180° Exit
SCM-1LC-A	1-Port (2 Fiber) Duplex LC SM/MM Fiber Module, 45° Exit
SCM-1LC-C-A	1-Port (2 Fiber) Duplex LC SM Fiber Module, 45° Exit
SCM-2LC	2-Port (4 Fiber) Duplex LC SM/MM Fiber Module, 180° Exit
SCM-2LC-C	2-Port (4 Fiber) Duplex LC SM Fiber Module, 180° Exit
SCM-2LC-A	2-Port (4 Fiber) Duplex LC SM/MM Fiber Module, 45° Exit
SCM-2LC-C-A	2-Port (4 Fiber) Duplex LC SM Fiber Module, 45° Exit

Standard module color is Light Ivory. For White add -WH.
SM/MM adapters use phosphor bronze sleeve. SM adapters use zirconia ceramic sleeve.

Model
SCM-2MTRJ



Model
SCM-1MTRJ-A



MT-RJ Fiber Optic Connector Modules

PART NO.	DESCRIPTION
SCM-1MTRJ	1-Port (2 Fiber) Duplex MT-RJ SM/MM Fiber Module, 180° Exit
SCM-2MTRJ	2-Port (2 Fiber) Duplex MT-RJ SM/MM Fiber Module, 180° Exit
SCM-1MTRJ-A	1-Port (4 Fiber) Duplex MT-RJ SM/MM Fiber Module, 45° Exit
SCM-2MTRJ-A	2-Port (4 Fiber) Duplex MT-RJ SM/MM Fiber Module, 45° Exit

Standard color is Light Ivory. For White add -WH.

Model
SCM-2MTRJ-A



A

WORK
AREA

Signamax work area wiring solutions include faceplates for single or double-gang back boxes, and can also be used in boxless installations where a mounting bracket is used. Single-gang faceplates accommodate up to three single or dual connector modules, while double-gang faceplates provide double the capacity for up to 12 ports in a single location. Faceplates can be identified using the identification card with clear covers, or substitute the color matched screw cover, when identification is not required.

Single and Double Gang Faceplates



Model
DGF-12



Single and Double Gang Faceplates

PART NO.	DESCRIPTION
SGF-06	Single Gang Faceplate with 2 ID Labels, 2 Clear ID Covers, 2 Color-Coded Screw Covers and Mounting Screws
DGF-12	Double Gang Faceplate with 4 ID Labels, 4 Clear ID Covers, 4 Color-Coded Screws Covers and Mounting Screws

Standard color is Light Ivory. For White add -WH.

Each connector module port can be easily identified using preprinted icon labels. Designation labels can also be specified as custom printable using a downloadable template and color-coded printer-compatible label sheets. Connector module features a recessed area above each port to accommodate a clean, quick installation of both label types. Labels can also be specified for custom identification of faceplates using a downloadable template.

Workstation & Port Designation Products



Port And Faceplate Designation Labels

PART NO.	DESCRIPTION
DL-30-XX	Designation Icon Labels, Sheet of 30 Assorted Labels (6-Data, 6-Voice, 2-Printer, 2-Fax, 2-LAN, 2-Modem, 2-Video, 8-Blank).
DL-112-XX	Port Designation Labels, Sheet of 112 Labels, Custom Printable.
FL-100B-WH	Faceplate Designation Cards, Sheet of 100, White Only Custom Printable.

For label color substitute XX for color in P/N.

BU=Blue GN=Green OR=Orange RD=Red
 WH=White YE=Yellow IV=Light Ivory

Surface Mount Faceplate Boxes

PART NO.	DESCRIPTION
SMB1-SG	Single Gang Surface Mount Box, 1.25" Deep
SMB1-DG	Double Gang Surface Mount Box, 1.25" Deep

Standard color is Light Ivory. For White add -WH.

A

WORK
AREA

Surface Mount Multimedia Boxes are a convenient way to mount connector modules in the work area, for any cable type. These single and dual module boxes consolidate cabling from behind the wall, on the wall or from surface raceways. These boxes are ideal for mixing cable types, and offer knockouts in the covers that permit a smooth transition to industry-standard raceways.

1 and 2-Module Surface Mount Multimedia Boxes



Surface Mount Multimedia Boxes

PART NO.	DESCRIPTION
SMMB-1	1-Module Surface Mount Multimedia Box
SMMB-2	2-Module Surface Mount Multimedia Box

Standard color is Light Ivory. For White add -WH.

The three-module surface-mount multi-media box has two integral cable management spools, for storing slack cable lengths. Port identification can be accomplished two ways – using color-coded icons on the box cover, and port identification on the connector modules. These surface boxes are compatible with all Signamax Modular Outlet System inserts for copper & fiber optic cables.

3-Module Surface Mount Multimedia Box



3-Module Surface Mount Multimedia Box with Cable Management

PART NO.	DESCRIPTION
SMMB-3F	3-Module Surface Mount Multimedia Box w/Cable Management

Standard color is Light Ivory. For White add -WH.

A

WORK
AREA

Signamax high-performance Category 6 connectors have been designed to meet the need for high-bandwidth applications, or to anticipate the need for extreme future requirements. Category 6 connectors are slim in profile for the highest density cabling applications, and are engineered to exceed TIA/EIA-568-B.2-1 Category 6 specifications. Jacks support both T568A and T568B wiring for maximum flexibility and can be terminated using standard single position 110 or Krone termination tools. Combine the connectors with any other Signamax Category 6 rated component to achieve an ultra-high level of channel performance.

Category 6 Keystone Jacks



Model
KJ458-C6-RD



Model
KJ458-C6-YE



CAT 6



Model
KJ458-C6-BU



Model
KJ458-C6-BK

Category 6 Keystone Jacks

PART NO.	DESCRIPTION
KJ458-C6	Category 6 Keystone Jack, Universal Wiring T568A/B, Light Ivory
KJ458-C6-WH	Category 6 Keystone Jack, Universal Wiring T568A/B, White
KJ458-C6-BK	Category 6 Keystone Jack, Universal Wiring T568A/B, Black
KJ458-C6-BU	Category 6 Keystone Jack, Universal Wiring T568A/B, Blue
KJ458-C6-GN	Category 6 Keystone Jack, Universal Wiring T568A/B, Green
KJ458-C6-OR	Category 6 Keystone Jack, Universal Wiring T568A/B, Orange
KJ458-C6-RD	Category 6 Keystone Jack, Universal Wiring T568A/B, Red
KJ458-C6-YE	Category 6 Keystone Jack, Universal Wiring T568A/B, Yellow

Category 5e Keystone Jacks provide a sound platform for supporting all today's network operating systems including 100Base-TX and Gigabit Ethernet protocols. These modular connectors install easily with insulation displacement technology (IDC) to provide a gas-tight wire-to-connector interface. Signamax Category 5e jacks can be terminated with industry-standard 110 or Krone termination tools and feature color-coding for both T568A and T568B wiring. Jacks feature the ability to mount either color-coded icon tabs for service identification or dust covers to protect unused jacks. Category 5e jacks exceed specifications as defined in TIA/EIA-568-B.2.

Category 5e Keystone Jacks



CAT 5e

Category 5e Keystone Jacks

PART NO.	DESCRIPTION
KJ458-C5E	Category 5e Keystone Jack, Universal Wiring T568A/B, Light Ivory
KJ458-C5E-WH	Category 5e Keystone Jack, Universal Wiring T568A/B, White
KJ458-C5E-BK	Category 5e Keystone Jack, Universal Wiring T568A/B, Black
KJ458-C5E-BU	Category 5e Keystone Jack, Universal Wiring T568A/B, Blue
KJ458-C5E-GN	Category 5e Keystone Jack, Universal Wiring T568A/B, Green
KJ458-C5E-OR	Category 5e Keystone Jack, Universal Wiring T568A/B, Orange
KJ458-C5E-RD	Category 5e Keystone Jack, Universal Wiring T568A/B, Red
KJ458-C5E-YE	Category 5e Keystone Jack, Universal Wiring T568A/B, Yellow

Category 5e Shielded Keystone Jack

PART NO.	DESCRIPTION
KJS458-C5E	Category 5e Shielded Keystone Jack, Universal Wiring, T568A/B

Category 3 Keystone Jacks

PART NO.	DESCRIPTION
KJ126-C3U	Category 3 RJ-12 6 Wire Keystone Jack, USOC Wiring, Light Ivory
KJ126-C3U-WH	Category 3 RJ-12 6 Wire Keystone Jack, USOC Wiring, White

Model
KJ458-C5E-BK



Model
KJ458-C5E-YE



Model
KJ458-C5E-RD



Model
KJ458-C5E-WH



Model
KJ126-C3U



A

WORK
AREA

A number of accessories are available for Signamax modular connectors. For Category 5e and Category 6 connectors, designation icons and dust covers can be specified, for providing both port protection and color-coding. The universal wiring fixture is compatible with both Category 5e and 6 connectors. It helps to facilitate wire orientation and termination on-site.

Keystone Jack Accessories



Model
KJ-TF



Keystone Jack Dust Covers and Icon Tabs

PART NO.	DESCRIPTION
DDC-50D-XX	Designation Icon Dust Cover, Data Icon, Package of 50
DDC-50V-XX	Designation Icon Dust Cover, Voice Icon, Package of 50
DDC-50B-XX	Designation Icon Dust Cover, Blank, Package of 50
DIT-50D-XX	Designation Icon Tabs, Data Icon, Package of 50
DIT-50V-XX	Designation Icon Tabs, Voice Icon, Package of 50
DIT-50B-XX	Designation Icon Tabs, Blank, Package of 50

For standard colors substitute XX in P/N.

Icon and Dust Cover compatibility with Category 6 Jacks available 10/1/02

*BK=Black BU=Blue GN=Green OR=Orange
RD=Red WH=White YE=Yellow IV=Light Ivory*

Keystone Jack Termination Fixture

PART NO.	DESCRIPTION
KJ-TF	Keystone Jack Termination Fixture

Signamax Keystone Jack Multimedia Modules provides for a broad array of connector options for terminating various cable types in the work area. Keystone modules are available for various copper & fiber optic cable types for data, audio, video and CATV.

Keystone Jack Multimedia Modules



Keystone Jack Multimedia Connector Modules

PART NO.	DESCRIPTION
CMK-BL	Blank Keystone Module
CMK-SC	SC MM/SM Fiber Keystone Connector Module
CMK-ST	ST MM/SM Fiber Keystone Connector Module
CMK-MTRJ	MT-RJ MM/SM Fiber Keystone Connector Module
CMK-LC	LC MM/SM Fiber Keystone Connector Module
CMK-BNC	BNC Keystone Connector Module
CMK-F	F-Type Keystone Connector Module
CMK-RCAW	RCA Feed-Thru Keystone Connector Module - White
CMK-RCAR	RCA Feed-Thru Keystone Connector Module - Red
CMK-RCAY	RCA Feed-Thru Keystone Connector Module - Yellow
CMK-RCASW	RCA Solder-Tail Keystone Connector Module - White
CMK-RCASR	RCA Solder-Tail Keystone Connector Module - Red
CMK-RCASY	RCA Solder-Tail Keystone Connector Module - Yellow
CMK-SVHS	SVHS Feed-Thru Keystone Connector Module
CMK-RA	3-Way Binding Post Audio Keystone Connector Module - Red
CMK-BA	3-Way Binding Post Audio Keystone Connector Module - Black

Standard color is Light Ivory. For White add -WH.

Category 5e Feed-Thru Coupler

PART NO.	DESCRIPTION
KRJ-45/5S	Category 5e Feed-Thru Coupler, Black

Model
CMK-RCAY



Model
CMK-RCAR



Model
CMK-RCAW



Model
CMK-SVHS



Model
CMK-BA



Model
CMK-ST



Model
CMK-SC



A

WORK
AREA

Signamax keystone jack connectors are accommodated by a series of faceplates in both single and double gang configurations. Modular jacks, multimedia connectors and fiber optic inserts can be combined in one faceplate to configure for virtually any work area wiring requirement.

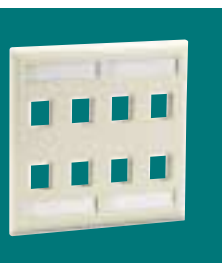
Keystone Jack Faceplates



Models
SGFK-1
SGFK-2
SGFK-3



Models
SGFK-4
SGFK-6



Models
DGFK-8



Models
DGFK-12



Models
FAK-3
FAK-4



Keystone Jack Faceplates

PART NO.	DESCRIPTION
SGFK-1	1-Port Single Gang Keystone Jack Faceplate
SGFK-2	2-Port Single Gang Keystone Jack Faceplate
SGFK-3	3-Port Single Gang Keystone Jack Faceplate
SGFK-4	4-Port Single Gang Keystone Jack Faceplate
SGFK-6	6-Port Single Gang Keystone Jack Faceplate
DGFK-8	8-Port Double Gang Keystone Jack Faceplate
DGFK-12	12-Port Double Gang Keystone Jack Faceplate

Standard color is Light Ivory. For White add -WH.

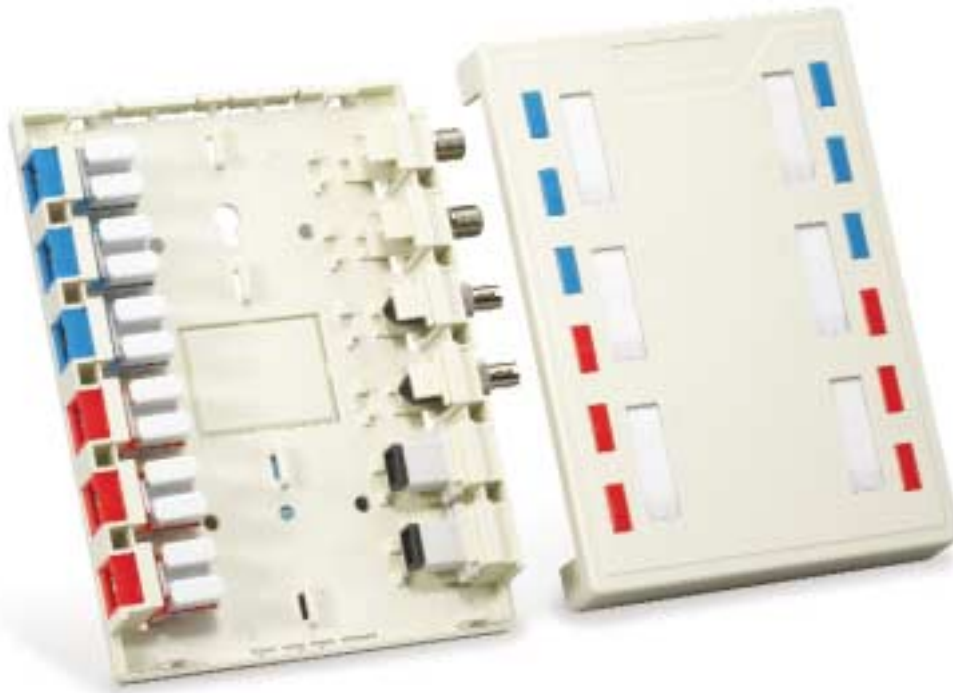
Keystone Jack Modular Furniture Adapters

PART NO.	DESCRIPTION
FAK-3	3-Port Keystone Jack Modular Furniture Adapter
FAK-4	4-Port Keystone Jack Modular Furniture Adapter

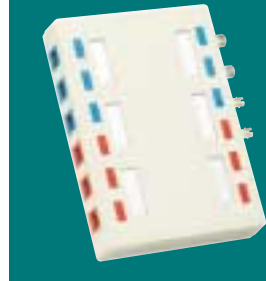
Standard color is Light Ivory. For White add -WH.

Keystone connectors and multimedia module inserts can be used in the Signamax Surface Mount Multimedia box, enabling the consolidation of up to 12 keystone modular connectors for surface mounting. These boxes are designed to also accommodate industry-standard surface raceways for a clean transition to the box. Individual connector ports can be color-coded using icons, and additional labeling areas are provided to suit the application.

Keystone Jack Surface Mount Multimedia Boxes



Model
SMK-12



Model
SMK-1



Model
SMK-2

12-Port Keystone Jack Surface Mount Multimedia Box

PART NO.	DESCRIPTION
SMK-12	12-Port Keystone Jack Surface Mount Multimedia Box

Standard color is Light Ivory. For White add -WH.
Not for use with Category 6 Keystone Jacks.

Keystone Jack Surface Mount Multimedia Boxes

PART NO.	DESCRIPTION
SMK-1	1-Port Keystone Jack Surface Mount Multimedia Box
SMK-2	2-Port Keystone Jack Surface Mount Multimedia Box

Standard color is Light Ivory. For White add -WH.
Not for use with Category 6 Keystone Jacks.