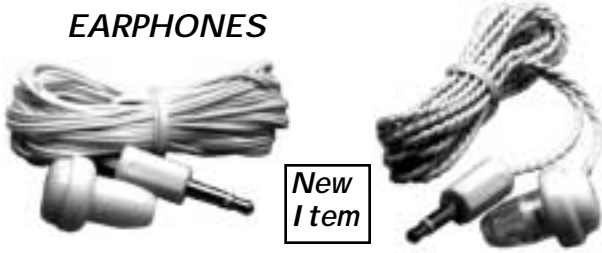


**EARPHONES**



**New Item**

- 70-216-0\* 8Ω 3.5mm plug 3' black cord
- 70-217-0 8Ω 3.5mm plug 6' beige cord
- 70-218-0 8Ω 3.5mm plug 3' twisted beige
- 70-220-0\* 8Ω 2.5mm plug 3' black cord
- 70-265-0 Crystal earphone 3.5mm 3' beige cord  
Use -1 for Display Package



**70-706-1**  
8Ω @ 10 watts 500Hz - 7.8KHz  
5" diameter opening, 6" wire leads.  
All metal with swivel bracket.

**EXTENSION SPEAKER**



**70-608-1**  
8Ω @ 5 watts  
113L x 110W x 66D (mm)  
2 meter cord with 3.5mm plug  
Detachable bracket



**70-707-1**  
8Ω @ 10 watts 500Hz - 7.8KHz  
5" diameter opening, 6" wire leads  
White ABS plastic

**OUTDOOR HORN SPEAKERS**



**70-703-1**  
8Ω @ 15 watts 360Hz - 7.5KHz  
5" x 8" opening, 8" length 12" wire leads  
Green ABS horn, metal mounting bracket

**MICROPHONE**

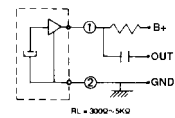
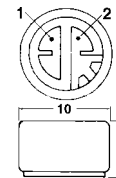


**72-118-1**  
Diecast professional uni-directional microphone.  
Impedance: 600Ω  
Frequency response: 60Hz to 12KHz  
Sensitivity: -73db @ 1KHz  
Weight: 285 grams  
Complete with storage case, 20' cord and bracket.



**70-704-1**  
8Ω @ 20 watts 360Hz - 7.5KHz  
4.5" x 8" opening, 9 1/4" length, 12" wire leads. White ABS plastic

**ELECTRET MICROPHONE**



**72-160-0** Omni-directional electret cartridge.  
Impedance: same as load resistor (RL)  
Sensitivity: -69db (Vcc=4.5V RL=1KΩ)  
Freq. response: 50Hz - 13KHz  
Input voltage: 1.5V to 10V (Typ. 4.5V)  
Current: .6mA maximum  
S/N ratio: over 40db

Bulk speaker wire is located on Page 48.

Mode Electronics is proud to be ISO 9003 Certified.

