

Color-Coded Flat Cable - Alpha

28 AWG (0.09 sq mm)
7/36 (7x0.13 mm)

Operating Temperature: 105°C Voltage rating: 300 Volt. Conductor: stranded tinned Copper Conductors on 0.050" (1, 27mm) Centers Insulation: Thermally-Bonded PVC Capacitance: 14pF/ft (45.9 pF/m) Nom. At 1 MHz. Propagation Delay: 1.4 ns/ft-0.18 ns (4.6 ns/m-0, 18 ns). Rise time pulse at 1 MHz Impedance: 105 Ohms, Nom. Crosstalk: Nom. Between 2 adjacent signal lines at 1 ns Rise Time over 10 ft (3.05m) Length, Near End: 3.2%; far End: 11.5% Passes UL VW-1 Flame Test UL AWM Style 20029 Transmission Characteristics: Ground-signal-ground-signal, etc. With all Grounds Common.

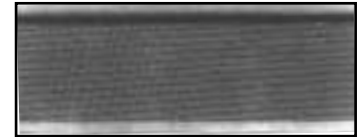
Alpha Part No.	No. of Cond.	Nominal Overall Width (W)		Nominal Span (S)		Insulation Thickness	
		Inches	mm	Inches	mm	Inches	mm
3583/9	9	0.45	11.43	0.4	10.16	0.01	0.25
3583/10	10	0.5	12.70	0.45	11.43	0.01	0.25
3583/14	14	0.7	17.78	0.65	16.51	0.01	0.25
3583/15	15	0.75	19.05	0.7	17.78	0.01	0.25
3583/16	16	0.8	20.32	0.75	19.05	0.01	0.25
3583/20	20	1	25.40	0.95	24.13	0.01	0.25
3583/24	24	1.2	30.48	1.15	29.21	0.01	0.25
3583/25	25	1.25	31.75	1.2	30.48	0.01	0.25
3583/26	26	1.3	33.02	1.25	31.75	0.01	0.25
3583/34	34	1.7	43.18	1.65	41.91	0.01	0.25
3583/37	37	1.85	46.99	1.8	45.72	0.01	0.25
3583/40	40	2	50.80	1.95	49.53	0.01	0.25
3583/50	50	2.5	63.50	2.45	62.23	0.01	0.25
3583/60	60	3	76.20	2.95	74.93	0.01	0.25
3583/64	64	3.2	81.28	3.15	80.01	0.01	0.25

Gray Flat Cable - Alpha

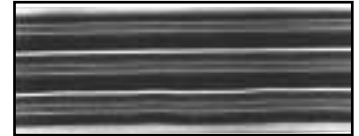
28 AWG (0.99 sq mm)
7/36 (7x0.13 mm)

Operating Temperature: 105°C Voltage rating: 300 Volt. Conductor: stranded tinned copper conductors on 0.050" (1, 27mm) Centers Insulation: PVC Capacitance: 14pF/ft (45.9 pF/m) Nom. At 1 MHz. Propagation Delay: 1.4 ns/ft-0.18 ns (4.6 ns/m-0, 18 ns). Rise time pulse at 1 MHz Impedance: 105 Ohms, Nom. Crosstalk: Nom. Between 2 adjacent signal lines at 1 ns Rise Time over 10 ft (3.05m) Length, Near End: 3.2%; far End: 11.5% Passes UL VW-1 Flame Test UL AWM Style 2651. Transmission Characteristics: Ground-sig-nal-ground-signal, etc. With all Grounds Common.

Alpha Part No.	No. of Cond.	Nominal Overall Width (W)		Nominal Span (S)		Insulation Thickness	
		Inches	mm	Inches	mm	Inches	mm
3580/9	9	0.45	11.43	0.4	10.16	0.01	0.25
3580/10	10	0.5	12.70	0.45	11.43	0.01	0.25
3580/14	14	0.7	17.78	0.65	16.51	0.01	0.25
3580/15	15	0.75	19.05	0.7	17.78	0.01	0.25
3580/16	16	0.8	20.32	0.75	19.05	0.01	0.25
3580/20	20	1	25.40	0.95	24.13	0.01	0.25
3580/24	24	1.2	30.48	1.15	29.21	0.01	0.25
3580/25	25	1.25	31.75	1.2	30.48	0.01	0.25
3580/26	26	1.3	33.02	1.25	31.75	0.01	0.25
3580/34	34	1.7	43.18	1.65	41.91	0.01	0.25
3580/37	37	1.85	46.99	1.8	45.72	0.01	0.25
3580/40	40	2	50.80	1.95	49.53	0.01	0.25
3580/50	50	2.5	63.50	2.45	62.23	0.01	0.25
3580/60	60	3	76.20	2.95	74.93	0.01	0.25
3580/64	64	3.2	81.28	3.15	80.01	0.01	0.25



3580



3583

Color-Coded Flat Cable - Belden

28 AWG

Operating Temperature: -20°C to +105°C Voltage rating: 300V RMS Conductor: 28 AWG (7 x 36) Tinned Copper Insulation: .010" Nom. Wall Color Coded PVC Capacitance @ 1 MHz: 15pF/ft. (49 pF/m) Propagation Delay: 1.4ns/ft. (4.6ns/m) Impedance: 105 ohms UL: File #: E12683 Style: 2884

Belden Part No.	No. of Cond.	Dimensions			
		Width 'A'		Span 'B'	
		inch	mm	inch	mm
9R28025	25	1.250"	31.75	1.200"±.011"	30.48±.28

Gray Flat Cable - Belden

28 AWG

Avail. in MIL-C-49055/1
Operating Temperature: -40°C to +105°C Conductor: 28 AWG (7x36) Tinned Copper Insulation: .010" Nom. Wall Gray PVC Capacitance @ 1MHz: 15pF/ft. (49pF/m) Propagation Delay: 1.40 ns/ft. (4.6 ns/m) Impedance: 105 ohms UL File # E12683 Style: 2651 CSA: File # LL7874; CSA AWG I A 105°C 300V FT-1

Belden Part No.		MIL-C-49055/1 Designation	No. of Cond.	Dimensions			
Standard (UL & CSA)	MIL-C-49055/1 (QPL)			Width 'A'		Span 'B'	
			inch	mm	inch	mm	
9L28026	YP-3297	M49055/1-09	26	1.300"±.008"	33.02±.20	1.250"±.008"	31.75±.20

Vari-Twist - Belden

28 AWG

Operating Temperature: -20°C to +105°C Voltage Rating: 300V RMS Conductor: 28 AWG (7 x 36) Tinned Copper Insulation: .010" Nom. Wall Color Coded PVC Capacitance @ 1 MHz: 16pF/ft. (52 pF/m) Propagation Delay: 1.6ns/ft. (5.25 ns/m) Impedance (Balanced): 115 ohms (Unbalanced) 100 ohms UL: File #: E12683 Style: Dual RAted 2693 & 2697

Belden Part No.	No. of Cond.	Dimensions			
		Width 'A'		Span 'B'	
		inch	mm	inch	mm
9V28010	10	.500"	12.7	.450"±.012"	11.43±.30

