

Surge Protection/ Power Distribution



Power Strips

- 37-002 Standard. Length 13^{1/4}". Individually boxed. Six foot cord. Circuit breaker protected.
- 37-004 Surge protected. Length 16^{1/4}". Individually boxed. Six foot cord. Circuit breaker protected.
- 37-006 Surge protected with noise filter. Length 16^{1/4}". Individually boxed. Six foot cord. Circuit breaker protected.
- 37-112 Five outlet surge protector with F-81 jacks input and output. Six foot cord. 125 VAC, 15 amp with full 3 line surge protection and EMI/RFI filter for CATV/MATV cable. Boxed. Circuit breaker protected.
- 37-113 Five outlet surge protector with RJ-11 jacks input and output. Six foot cord, 125 VAC, 15 amp with full 3 line surge protection and EMI/RFI filter for fax, modem or telco cable. Boxed. Circuit breaker protected.



Deluxe Power Strips

- 37-706 Full surge protection with surge tester and audible alarm 3 MOV's, EMI/RFI, with buzzer. Six foot cord.
- 37-708 Surge protector with 2 outlets always on and the other outlets controlled by a switch. Metal case with 1 MOV. Six foot cord.

Surge Cubes

- 37-301 One outlet. Wall plug with surge protection. Rating and power: 125V, 15 amp, 60 Hz.
- 37-303 Three outlet transient voltage surge protector. Wall plug with noise and surge protection. Rating and power: 125V, 15 amp, 60 Hz.



GC/Waldom

StormGuard™ Electronics Surge Protection WD-7461

Unique, compact design provides easy portability when protecting home electronics such as TVs, VCRs, boom boxes and modern appliances. Patented "pass-through" connection allows unit to mount directly onto the male (2 or 3 conductor) plug of the electronic equipment being protected. Indicator light shows unit is protecting. Specifications: Cond - 2. Type - 1 outlet. UL Clamping Voltage @ 500 amps/Joules - 400V/70J (L-N). Color - White. Standard pack - 12. Five hundred-dollar equipment replacement guarantee.



Industrial Grade Surge Protection WD-7407

Tough steel construction that stands up to job site abuse. The 15-foot hi-visibility power cord and multiple outlets provide safety and power where needed, without having to mess with additional extension cords. 510 joules provide protection for today's high-tech power tools. Specifications: Cond - 3. Type - 6 outlet. UL clamping voltage @ 500 amp/joules - 330V/510J. Color - black. Standard pack - 2. Three year 100% equipment replacement guarantee.



GC/Waldom

Surge Suppressors Electrical ratings - 125V/15A/1875W

Six-Outlet Strip

Maximum spike current - 4500 amps. Response time - less than 1 nanosecond. Maximum surge voltage - 6500 volts.

- General protection
- 64-661 4 ft. cord
 - 64-6610 10 ft. cord
 - 64-6615 15 ft. cord

Maximum surge dissipation - 90 joules. Clamping voltage - 330 volts. Line protected - hot to neutral.

- 64-667 4 ft. cord

Maximum surge dissipation - 420 joules. Clamping voltage - 400 volts. Lines protected - hot to neutral, neutral to ground and hot to ground.

- 64-668

Maximum surge dissipation - 270 joules. Clamping voltage - 330 volts. Line protected - hot to neutral.

Wall Mount 6-Outlet 64-802

Maximum protection. Maximum surge dissipation - 240 joules. Maximum spike current - 4500 amps. Clamping voltage - 400 volts. Response time - less than 1 nanosecond. Maximum surge voltage - 6500 volts. Lines protected - hot to neutral, neutral to ground and hot to ground. Coax line surge specifications: Maximum energy dissipation - 46 joules. Maximum spike current - 1200 amps.



Five-Outlet Strip EMI/RFI 64-830

Maximum protection. Maximum surge dissipation - 200 joules. Maximum current - 4500 amps. Maximum spike voltage - 6500 volts. Clamping voltage - 400 volts. Response time - less than 1 nanosecond. Maximum surge voltage - 6500 volts. Lines protected - hot to neutral, neutral to ground and hot to ground. Coax line surge specifications: Maximum energy dissipation - 46 joules. Maximum spike current - 1200 amps. EMI/RFI noise specifications: Frequency - 100 KHz - 30 MHz. Attenuation - -5db thru -40db.



Six-Outlet Strip EMI/RFI 64-804

Maximum protection. Maximum surge dissipation - 357 joules. Maximum current - 4500 amps. Maximum spike voltage - 6000 volts. Clamping voltage - 330 volts. Response time - less than 1 nanosecond. Maximum surge voltage - 6000 volts. Lines protected - hot to neutral, neutral to ground and hot to ground. Phone line surge specifications: Maximum energy dissipation - 72 joules. Clamping voltage - 395 volts. Maximum spike current - 1200 amps. EMI/RFI noise specifications: Frequency - 150 KHz - 100 MHz. Attenuation - up to 40db.



Surge Protection/Power Distribution

GC/Waldom

Power Strips

Six-Outlet Strip

64-807 Plastic, 4 ft. cord
 64-808 Metal, 4 ft. cord
 64-8080 Metal, 10 ft. cord



Electrical ratings - 120V/15A/1875W. Power cord - 14 AWG, UL SJT. Circuit breaker - 15 amp resettable.

Workshop

WD-7408 4 ft. cord

Durable strips with safety features and added room for transformer outlets. Electrical ratings - 125V / 15A / 1875W. Cond - 3. Type - 6 outlet. Description - Transformer Deck™ Plastic Strip fits 2 transformers and 4 regular outlets. Color - black/yellow. Standard pack - 3.



Converters

WD-2178 6 ft. cord

Multiple outlet strips convert a standard wall outlet into six or eight grounded outlets. Feature built-in circuit breaker. Cond - 3. Type - 8 outlet. Description - Metal. Color - black. Wire - 14/3 SJT. Standard pack - 2.

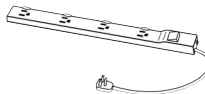


Multiple Outlets

Electrical ratings - 125V/15A/1875W Home

WD-7416 1.5 ft. cord

Strip with decorative design and safety features ideal for the home. Cond - 3. Type - 4 outlet. Description - Countertop™ Plastic Strip for kitchen backsplash, spring-loaded outlet covers. Color - white. Standard pack - 3.



Strips

WD-7499 3 ft. cord

Cond - 3. Type - 9 outlet. Description - plastic, transformer spaced outlets. Color - light gray. Standard pack - 2.



Multimedia - Computer/Modem & Cable/Coax Surge Protection

WD-5199

Cond - 3. Type - 7 outlet. Description - Multimedia Protector Strip with phone/fax/modem line and cable/coax protection. UL clamping voltage @ 500 amps/joules - 330V/510J. Color - Off-white. Standard pack - 4. Lifetime 100% equipment replacement guarantee.



GC/Waldom

Surge Suppressors & Power Strips

Electrical ratings - 120V/15A/1875W

Six-Outlet Metal Surge Suppressor - Maximum Protection

64-631



Functions to absorb excess voltage and reduce the surge to a safe level before it reaches your electrical/electronic equipment. Has circuit breaker for overload protection. Indicator verifies the unit is protecting. Durable steel case with baked enamel finish. Meets UL 1449 for surge suppressors. Three line protection - hot, neutral and ground. Surge dissipation - 270 joules. Surge voltage - 6000 volts. Surge current - 4500 amps. Response time - less than 1 nanosecond. Surge indicator - fused LED. EMI/RFI - noise reduction 100 Hz to 50 MHz. Four foot cord.

Five-Outlet Power Center Metal

64-6651 5 1/2 ft. cord



Maximum protection. Maximum surge dissipation - 260 joules. Maximum current - 4500 amps. Maximum spike voltage - 6000 volts. Clamping voltage - 330 volts. Response time - less than 1 nanosecond. Maximum surge voltage - 6000 volts. Three lines protected - hot to neutral. Phone line surge specifications: Maximum energy dissipation - 40 joules. Clamping voltage - 395 volts. Maximum spike current - 1200 amps. EMI/RFI noise specifications: Frequency - 100 KHz - 1 MHz. Attenuation - -10 db to -35 db.

Application Specific Series™ - Surge Protection

Power Solutions

WD-2271 Strip, standard pack - 5
 WD-5187 Tap, standard pack - 4



Computer and modem protector strip with phone/fax/modem line protection. Cond - 3. Type - 6 outlet. UL clamping voltage @ 500 amps/joules - 330V/510J. Color - Off-white. Lifetime 100% equipment replacement guarantee.

Portable Computer + Modem Surge Protection

WD-2724

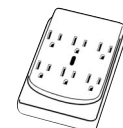
Cond - 3. Type - 2 outlet. Description - Portable computer + modem protector tap with ModemMate™ protection. UL clamping voltage @ 500 amps/joules - 330V/300J. Color - black. Standard pack - 5. One year 100% equipment replacement guarantee.



Computer Surge Protection

WD-5185 Computer protector tap

Cond - 3. Type - 6 outlet. UL clamping voltage @ 500 amps/joules - 330V/510J. Color - Off-white. Standard pack - 4. Lifetime 100% equipment replacement guarantee.



Surge Protection/Power Distribution

GC/Waldom

Digital Satellite & Cable TV Surge Protection WD-5198

Cond - 3. Type - 6 outlet. Description - Digital satellite and cable TV protector strip with cable/coax, phone and digital satellite line protection. UL clamping voltage @ 500 amps/joules - 330V/680J. Color - Off-white. Standard pack - 3. Lifetime 100% equipment replacement guarantee.



Office Equipment Surge Protection WD-5613

Cond - 3. Type - 3 outlet. Description - Office equipment protector tap. UL clamping voltage @ 500 amps/joules - 330V/270J. Color - Off-white. Standard pack - 5. One year 100% equipment replacement guarantee.



Appliance Surge Protection

WD-0414

Cond - 3. Type - 6 outlet. Description - Home electronics protector tap. UL clamping voltage @ 500 amps/joules - 330V/300J. Color - Off-white. Standard pack - 4. One year 100% equipment replacement guarantee.



WD-0425

Cond - 3. Type - 6 outlet. Description - Home electronics protector strip. UL clamping voltage @ 500 amps/joules - 330V/100J. Color - Off-white. Standard pack - 12.

Phone, Fax and Answering Machine Surge Protection WD-2277

Cond - 3. Type - 1 outlet. Description - Phone, fax and answering machine protector tap with phone line protection. UL clamping voltage @ 500 amps/joules - 330V/300J. Color - Off-white. Standard pack - 5. One year 100% equipment replacement guarantee.



Philmore

Triple Outlet with Light Indicator CA408

Electrical ratings -15A/125VAC/60Hz/1875W. Suppression 500V peak continuous duty. Repeated usage self-restoring. Maximum spike - 40 joules one time. Energy dissipation - 20 joules. Maximum spike voltage - 4500 volts. Clamping spike current - 395 volts. Maximum spike current - 4500 amps. Clamping response time - Less than 1 nanosecond.

Economy Six Outlet

70-405 No surge
70-406 3 Lines surge protected
70-661 1 Line surge protected



Economy 6-outlet strip with 4-foot cord, plastic housing and 15 amp circuit breaker. ON-OFF switch is lighted.

Philmore

Expander III 70-8030

Duplex outlet expander AC six position power tap with full surge. Economical yet provides complete protection for all sensitive electronic equipment. The 3 MOV will provide worry-free protection. LED indicator to show that protection circuits are functioning. UL approved and rated at 15 amps, 125 VAC and 1875 watts.



Computer Surge Protection

This series of surge protectors protects the AC line for the three modes by which a spike or surge may enter and dissipates them completely. Features: Power - 120VAC, 15 amp, 1875 watts. Cord - 6 ft, 14 AWG, 3-prong plug. Circuit breaker - 15 amps maximum. AC outlets - "U" grounded. Indicator - Surge assurance light. RF filter - EMI/RFI noise filter. Filters from 500 KHz to 30MHz. Attenuation is from 10db to 35db. Maximum dissipation - 40 x 3 joules. Maximum voltage - 150 volts RMS. Maximum spike current - 4500 amps for 8 x 20 US spike surge. Maximum clamping voltage - 395 volts RMS. Clamp response time - 1 ns.

PT06

AC power line

For general purpose usage with any modem electronic equipment. Use when only the AC electric power line is a potential path for damaging surges. May be used with virtually all electronics, including computers and television. Protection includes EMI/RFI filtering as well as three mode surge protection.



PT06V

AC power lines and TV antenna/Cable "F" connector jack

Includes all of the PT06 features and also has an added circuit to protect antenna terminals for TV. Standard antenna "F" connectors are provided for simple connections; use with either an outdoor antenna or cable TV service. Will not degrade picture quality.



PT06M

AC power lines and modem, fax or answering machine

The telephone line can be as dangerous as the power line; a dangerous path for surge due to distant lightning or inductive surges. Model has modular telephone jacks for protecting the telephone line too.



Surge Protection

PT07 AC line protection only
PT07V AC line and TV/VCR antenna protection
PT07M AC line and TV line protection; for modems, faxes and answering machines



This series of AC line protectors provides 3-mode protection against surges and spikes and units have additional circuitry for the protection of other paths of damaging surges. The small size is not an indication of power capacity, these are full power surge protectors. Single-pocket devices.

Surge Protection/Power Distribution



STV25K DIN Rail Series

STV25K-10S 120V, single phase
STV25K-24S 240V, single phase



The STV25K DIN Rail Series surge suppressors provide point-of-use protection against damaging transients at the dedicated equipment level. Ideal for installation in electronic control cabinets found on the factor floor or at remote locations. These devices provide protection for sensitive control and computer equipment from the effects of internally and externally generated transients found in harsh industrial environments. Devices provide 50,000 amps of surge protection, sine wave tracking, LED status indication and form "C" dry contacts. Also provides protection on all modes or electrical paths and comes with a standard ten year product warranty. UL recognized to Standard 1449, 2nd edition. Compact narrow design for minimized panel space requirements. Compact design minimizes connecting lead length while reducing impedance ensuring a superior clamping performance of 400 volts or less. Easy access terminal screws for quick mounting and installation. Patented thermal fusing prevents MOV overheating caused by excessive current levels.

STV100K Series

Sola/Hevi-Duty's STV100K series is a hard wired surge suppressor designed to be installed at the service entrance, branch panels or dedicated sensitive electronic loads. These units feature all mode protection, LED and audible alarm status indication, sine wave tracking and Form C dry contacts. Also contains the highest levels of safety built into the product including thermal fusing and a fault current fusing level of 65 kAIC. Features: 100,000 amp peak current rating to provide protection against severe transients. All mode protection. Excellent clamping levels (400 V at 120 V lines) provide protection for sensitive microprocessor-based equipment. 65kAIC fault current fusing level provides safety and NEC conformance while preventing damage to electrical panels due to short circuits or component failure. LED status and audible alarms provide visual and audible indication of surge suppressor status. Listed to UL 1449, 2nd Edition, UL 1283. Compact design with NEMA 12 enclosure. Thermal fusing prevents the MOV protection from overheating when exposed to high current levels.



Catalog No.	Input Voltage	Description
STV100K-10S	120/240	Single Phase 3 wire + ground
STV100K-10Y	208Y/120	Three Phase Wye 4 wire + ground
STV100K-27Y	480Y/277	Three Phase Wye 4 wire + ground
STV100K-48D	480	Three Phase Wye 4 wire + ground



CVS Hardwired Series - Constant Voltage Transformers



Superior voltage regulation sets the CVS Series apart from other power conditioning technologies on the market. This extremely tight regulation ($\pm 1\%$) is accomplished by Sola's patented ferroresonant transformer technology. The CVS Series recreates a well regulated sinusoidal waveform on its output that is well isolated from input disturbances including impulses, swells, sags, brownouts and severe waveform distortion. No other power conditioning technology available today provides as complete a solution against these power quality disturbances. The ideal solution for applications where even a small change in voltage level can lead to unscheduled downtime, misoperation, incorrect data or scrapped production. Features: Superior voltage regulation. Harmonic filtering. Hardwired. Acts as a Step-up/Step-down transformer. Galvanic isolation. Twenty-five year typical Mean Time Before Failure. No maintenance required.

Group I - 60 Hz

Catalog No.	VA	Voltage Input	Voltage Output	Height (inch)	Width (inch)	Depth (inch)	Ship Wgt. (lbs)
23-13-030-2	30	120	120	6	3.3	5.2	7
23-13-060-2	60	120	120	6.9	3.3	5.2	9
23-22-112-2	120	120, 240	120	7.9	3.3	5.2	13
23-23-125-8	250	120, 240, 480	120	10.4	4.5	7.9	29
23-23-150-8	500	120, 208, 240, 480	120, 240	12.9	7.8	6.5	42
23-23-210-8	1000	120, 208, 240, 480	120, 240	17.1	7.8	6.9	65
23-23-220-8	2000	120, 208, 240, 480	120, 240	17.3	10.6	9.4	111
23-23-230-8	3000	120, 208, 240, 480	120, 240	18.7	10.6	9.4	142
23-23-250-8	5000	120, 208, 240, 480	120, 240	28.2	10.6	9.4	222
23-28-275-6	7500	240, 480	120, 240	26.6	23.7	9.1	365

MCR Hardwired Series - Power Line Conditioning with Voltage Regulation



Provides excellent noise filtering and surge suppression to protect connected equipment from damage, degradation or misoperation. Combined with the excellent voltage regulation ($\pm 3\%$) inherent to Sola's patented ferroresonant design, the MCR can increase the actual Mean Time Before Failure (MTBF) of protected equipment. The MCR is a perfect choice where dirty power, caused by impulses, swell, sags, brownouts and waveform distortion can lead to costly downtime because of damaged equipment. Features: Noise attenuation - 120dB common mode and 60 dB transverse mode. Surge suppression tested to ANSI-IEEE C63.41 Class A&B Waveform <10 V let through typical. Acts as a Step-up or Step-down transformer. Harmonic filtering. Hardwired. Galvanic isolation. Twenty-five year typical MTBF and no maintenance required.

Group II - 60 Hz

Catalog No.	VA	Voltage Input	Voltage Output	Hght. (inch)	Wdth. (inch)	Dpth. (inch)	Ship Wgt. (lbs)
63-23-112-4	120	120, 208, 240, 480	120	9	4	5	15
63-23-125-4	250	120, 208, 240, 480	120	10	5	8	27
63-23-150-8	500	120, 208, 240, 480	120, 208, 240	13	8	7	37
63-23-175-8	750	120, 208, 240, 480	120, 208, 240	14	8	7	52
63-23-210-8	1000	120, 208, 240, 480	120, 208, 240	17	8	7	62
63-23-215-8	1500	120, 208, 240, 480	120, 208, 240	16	11	9	95
63-23-220-8	2000	120, 208, 240, 480	120, 208, 240	17	11	9	109
63-23-230-8	3000	120, 208, 240, 480	120, 208, 240	19	11	9	142
63-23-250-8	5000	120, 208, 240, 480	120, 208, 240	28	11	9	222
63-28-310-8	10000	208, 240, 480	120, 208, 240	28	24	9	446
63-28-315-8	15000	208, 240, 480	120, 208, 240	28	36	9	710

Surge Protection/Power Distribution



MCR Portable Series - Power Line Conditioning with Voltage Regulation



Provides excellent noise filtering and surge protection to protect connected equipment from damage, degradation or misoperation. Combined with the excellent voltage regulation ($\pm 3\%$) inherent to Sola's patented ferroresonant design, the MCR can increase the actual Mean Time Before Failure (MTBF) of protected equipment. The MCR is a perfect choice where dirty power caused by impulses, swell, sags, brownouts and waveform distortion can lead to costly downtime because of damaged equipment. Features: Noise attenuation - 120 dB common mode and 60 dB transverse mode. Surge suppression tested to ANSI/IEEE C63.41 Class A & B Waveform <10 V let-through typical. Harmonic filtering. Galvanic isolation. Point-of-use protection - cord and plug connected, easy and flexible installation. Twenty-five year typical MTBF. No maintenance required.

Group A - 60 Hz

Catalog No.	VA	Volt. I/O	Hght (in.)	Wdth (in.)	Dpth (in.)	Ship Wght (lbs)	Receptacle (No.) Type (NEMA)	Plug (NEMA)
63-13-070-6	70	120	6	7	9	18	(4) 5-15R	5-15P
63-13-115-6	150	120	6	7	9	21	(4) 5-15R	5-15P
63-13-125-6	250	120	6	7	9	26	(4) 5-15R	5-15P
63-13-150-6	500	120	9	9	16	32	(4) 5-15R	5-15P
63-13-175-6	750	120	9	9	16	64	(4) 5-15R	5-15P
63-13-210-6	1000	120	9	9	16	69	(4) 5-15R	5-15P
63-13-215-6	1500	120	11	11	17	95	(6) 5-15R	5-20P
63-13-220-6	2000	120	11	11	17	115	(4) 5-15R, (1) L5-30R	L5-30P
63-13-230-6	3000	120	11	11	17	143	(4) 5-15R, (1) L5-30R	L5-50P

Group B - 50 Hz

Catalog No.	VA	Volt. I/O	Hght (in.)	Wdth (in.)	Dpth (in.)	Ship Wght (lbs)	Receptacle (No.) Type (NEMA)	Plug (NEMA)
63-13-625-9	250	220 240	7	8	13	36	(2) IEC-320	3-WIRE PIGTAIL
63-13-650-9	500	220 240	9	9	16	45	(4) IEC-320	3-WIRE PIGTAIL
63-13-710-9	1000	220 240	9	9	16	54	(4) IEC-320	3-WIRE PIGTAIL
63-13-720-9	2000	220 240	10	11	17	118	(4) IEC-320	3-WIRE PIGTAIL

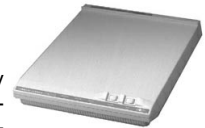


Tripp Lite Diagnostic Surge Suppressors

Catalog Number	No. of AC Recep.	Surge Supp. Amps	Energy Rating (joules)	RFI/EMI Noise Filtering	Rsttbl. Circuit Breaker	AC Cord Lgth.	Dims. (HxWxD)
CCC 4	4	13,000	720	80 db @ 1MHz	Yes	8'	2x10 ^{1/2} x14 ^{1/2}
TR 6	6	13,000	720	80 db @ 1MHz	Yes	6'	1 ^{3/4} x 3 ^{1/4} x 9
TR 6FM	6	13,000	720	80 db @ 1MHz	Yes	6'	1 ^{3/4} x 3 ^{1/4} x 9
Super 7	7	9,500	360	20 db @ 1MHz	Yes	7'	1 ^{1/2} x2 ^{3/4} x11 ^{1/4}
SK 6-6	6	9,500	480	20 db @ 1MHz	Yes	6'	1 ^{3/4} x2 ^{1/2} x10 ^{3/4}
STIK	6	6,500	240	20 db @ 1MHz	Yes	6'	1 ^{1/2} x2x9 ^{1/4}
SK6-0	6	6,500	112	20 db @ 1MHz	No	Direct plug-in	4 ^{1/4} x3 ^{3/8} x1 ^{1/4}
STRIKER	6	6,500	38	20 db @ 1MHz	Yes	4'	1 ^{1/4} x 2 x 11
SMP	1	6,500	360	20 db @ 1MHz	No	Direct plug-in	3 ^{3/4} x2x1 ^{1/2}
TSB	-	-	-	-	-	-	7/8x2 ^{1/4} x2 ^{3/4}
MP	-	-	-	-	-	-	7/8x2 ^{1/4} x2 ^{3/4}

Command Console Compact

CCC4



System organizer. Master switch and auxiliary switches give you fingertip control of your computer and peripherals. Desk level outlets eliminate cord clutter. Metal oxide varistors, toroidal chokes and high frequency capacitors provide instantaneous response for superior surge absorption. AC overload protection with resettable 15 amp circuit breaker. Diagnostic indicators alert you to AC power problems before you turn your equipment on. Modes of protection: H-N, H-G and N-G. \$5000 Ultimate Lifetime Insurance® coverage against surge damage for connected equipment. Five year product warranty.

Terminator

TR6



\$10,000 Ultimate Lifetime Insurance® coverage against surge damage for connected equipment. Metal oxide varistors, toroidal chokes and high frequency capacitors provide instantaneous response for superior surge absorption. Diagnostic indicators alert you to AC power problems before you turn your equipment on. Six AC outlets and 6 foot power cord. AC overload protection with resettable 15 amp circuit breaker. Modes of protection: H-N, H-G and N-G. Lifetime product warranty.

Fax/Modem Protector

TR 6FM



\$10,000 Ultimate Lifetime Insurance® coverage against surge damage for connected equipment. Surge protection for one dataline, plus all the same features of the Terminator, including surge suppression, noise filtering and diagnostic indicators. RJ11 modular jacks and 12 foot phone cord included. Lifetime product warranty

Super 7 Spike Bar

SUPER 7



\$5000 Ultimate Lifetime Insurance® coverage against surge damage for connected equipment. Diagnostic indicators alert you to AC power problems before you turn your equipment on. Seven AC outlets and 7 foot power cord. AC overload protection with resettable 15 amp circuit breaker. Modes of protection: H-N, H-G and N-G. Five year product warranty.

Surge Protection/Power Distribution



Tripp Lite Diagnostic Surge Suppressors (cont.)

Spike Bar SK 6-6



\$5000 Ultimate Lifetime Insurance® coverage against surge damage for connected equipment. Six AC outlets and 6 foot power cord. AC overload protection with resettable 15 amp circuit breaker. Modes of protection: H-N, H-G and N-G. Lifetime product warranty.

Spike Stik STIK



Six AC outlets and 6 foot power cord. AC overload protection with resettable 15 amp circuit breaker. Modes of protection: H-N and H-G. 240 joules of energy absorption. One year product warranty.

Direct Plug-in Surge Suppressor and Noise Filter SK 6-0



Six outlets. Modes of protection: H-N, N-G and H-G. Two year warranty.

Spike Striker STRIKER



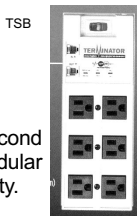
General purpose surge suppressor. Six AC outlets and 4 foot power cord. AC overload protection with resettable 15 amp circuit breaker. Mode of protection: H-N. One year product warranty.

AC and Fax/Modem Protector SMP



\$500 Ultimate Lifetime Insurance® coverage for your equipment. Surge protection for one AC outlet and one data line. RJ11 modular jacks and 12 foot phone cord included. Two year product warranty.

Phone and Modem Protectors



TSB MP

TSB features three stage filter network with picosecond response. Effective protection for one dataline. RJ11 modular jacks and 12 foot phone cord included. Two year warranty.



Isobar® Surge Suppressors

Exclusive isolated filter banks eliminate interference between equipment plugged into the Isobar. Instantaneous (0 nanosecond) surge response time. Protection in all 3 AC modes: hot to neutral, hot to ground and neutral to ground. "Cascade circuitry" allows you to choose increased noise protection levels for your most sensitive equipment (computers, disk drives, scanners, PBXs and key systems) and less for other devices (monitors, lights, TVs and VCRs). Virtually indestructible all-metal housing provides additional shielding of ambient RFI/EMI interference. Ideal for protecting sensitive equipment including computers, network nodes, file servers, phone systems and point-of-sale terminals. Ten thousand dollar Ultimate Lifetime Insurance covers the Isobar and connected equipment from surge related damage, including direct lightning strikes. All models include resettable circuit breaker.



Catalog Number	No. of AC Recep.	AC Cord Lgth. (ft.)	No. of Isolated Filter Banks	Fax Modem Protection	AC Energy Absorp. (joules)	Max Surge Curr. (amps)	Dimens. (HxWxD)	Ultim. Ins. Covg.
Isobar 2-6	2	6	1	No	480	18,000	2 ^{1/2} x5 ^{1/2} x3 ^{1/2}	\$10K
Isobar 4	4	6	2	No	720	27,000	2 ^{1/2} x5 ^{3/4} x3 ^{5/8}	\$10K
Isobar 6	6	6	3	No	840	36,000	2 ^{1/2} x7 ^{1/4} x3 ^{5/8}	\$10K
Isobar 8	8	12	4	No	960	45,000	2 ^{1/2} x8 ^{7/8} x3 ^{5/8}	\$10K

Isobar Ultra Surge Suppressors

All the features of the original Isobar and: Diagnostic indicators provide advanced warning of potential power problems. Multiple component circuitry, including MOV's, toroidal chokes, and high frequency capacitors provide superior protection for your electronic equipment. Instantaneous (0 nanoseconds) surge response time. Twenty-five thousand dollar Ultimate Lifetime Insurance covers the Isobar and connected equipment from surge related damage, including direct lightning strikes. All models include resettable circuit breaker.



Catalog Number	No. of AC Recep.	AC Cord Lgth. (ft.)	No. of Isolated Filter Banks	Fax Modem Protection	AC Energy Absorp. (joules)	Max Surge Curr. (amps)	Dimens. (HxWxD)	Ultim. Ins. Covg.
Isobar 4 Ultra	4	6	2	No	840	36,000	2 ^{1/2} x5 ^{3/4} x3 ^{5/8}	\$25K
Isobar 6 Ultra	6	6	3	No	960	36,000	2 ^{1/2} x7 ^{1/4} x3 ^{5/8}	\$25K
Isobar 8 Ultra	8	12	4	No	1,080	45,000	2 ^{1/2} x8 ^{7/8} x3 ^{5/8}	\$25K

Isotel Isobars with Fax/Modem Protection

Surges and spikes, like those that travel through AC lines, also travel through phone lines causing damage to your fax machine, modem and the connected computer. Outlet bar with RJ 11/31X modular jacks to protect one fax/modem line. Reduces EMI line noise by 27 db, improving transmission quality and reducing static. Includes 12-ft fax/modem cord.



Catalog Number	No. of AC Recep.	AC Cord Lgth. (ft.)	No. of Isolated Filter Banks	Fax Modem Protection	AC Energy Absorp. (joules)	Max Surge Curr. (amps)	Dimens. (HxWxD)	Ultim. Ins. Covg.
Isotel 4 Ultra	4	6	2	Yes	840	36,000	2 ^{1/2} x5 ^{3/4} x3 ^{5/8}	\$25K
Isotel 6 Ultra	6	6	3	Yes	960	36,000	2 ^{1/2} x7 ^{1/4} x3 ^{5/8}	\$25K